



Mission Middle Community School



Community Schools is an initiative that brings stakeholders-students, family members, staff, and community members- together to determine what the shared vision, goals, and values are for our school.

We start by asking questions, seeking input and feedback with on-going problems.

Participation in our Assets and Needs Assessment:



Participation occurred from February- April '26

What did we learn?

Students

- Problems that make school difficult: 40.5% Stressed, 36.4% difficulty with schoolwork, 12% Mental Health
- 55.7% participated in clubs/activities at school
- 80% feel positively about school
- 57.2% feel their opinions are heard by the adults at school

School Staff

- Believe students are facing these challenges that make school difficult: 80.6% Family Relational Stress, 77.4% Mental Health, 61.3% Difficulty Expressing their Needs
- 87.1% are aware of how to connect students with services in JUSD
- 29% can describe the 4 pillars of CS

Families

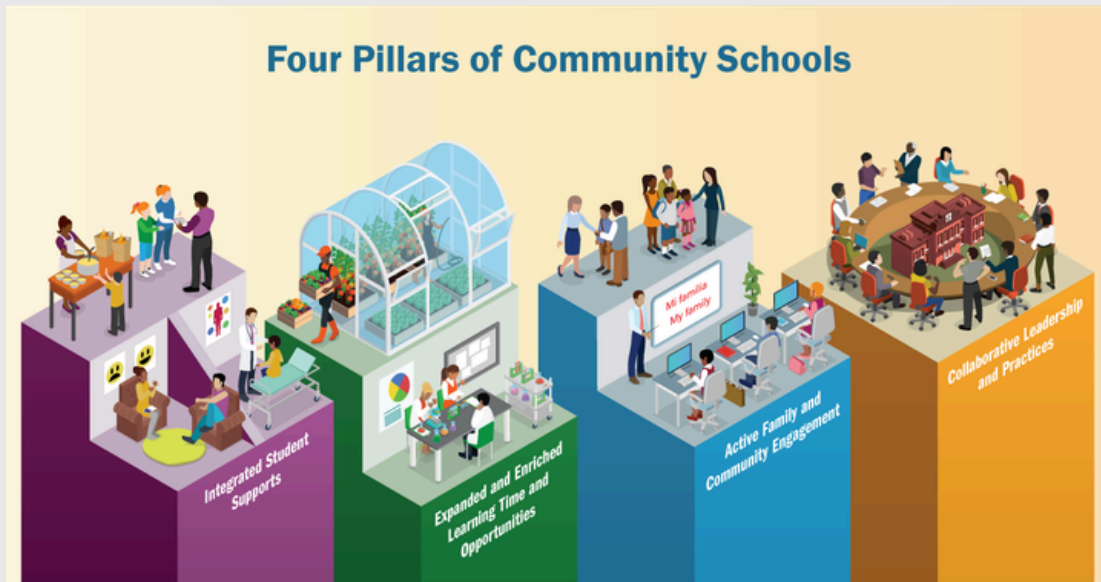
- 75% of families feel connected and involved in our school.
- Parent Square was used by 90% of those surveyed
- Events where families connected with MMs were Registration (65%), BTSN (60%), Incoming 7th grade night (60%), Coffee with the Principal (40%)
- Would like to see the following classes: 55% College/Career and Health and Wellbeing, 50% Keeping kids safe online, 45% Bullying Prevention, 40% Workshops on helping their Children and Drug Awareness

Community Members

- We have connected with 2 groups to provide Extended Learning opportunities for our students
- The organizations providing parent workshops are flexible to help support our community

Stakeholder responses and school data determines our 2026-27 Priority Needs based on the 4-pillars of Community Schools:

- Integrated Student Supports
- Expanded and Enriched Learning Time and Opportunities
- Active Family and Community Engagement
- Collaborative Leadership and Practices



Mission Middle School 2025-26 Community School Highlights

Integrated Supports

- Wellness Center with a BHA and BHPS
- Know the Signs Presentation
- Dental Visits
- Wellness Activities
- Celebrations for Positive Behavior
- Restorative Practices and Trauma Informed Practices Training
- Activities at Lunch

Active Family and Community Engagement

- Watch DOGS/MOMS
- Family Nights
- Zumba
- BTSN
- Incoming 7th grade night

Collaborative Leadership and Practices

- Student Advisory Council
- Community Schools Committee
- Coordination of Services Team (COST)
- School Site Council
- ELAC
- Second Teams

Expanded and Enriched Learning Time and Opportunities

- Speciality Advisory Classes
- Educational Fieldtrips
- Targeted ELA and Math Tutoring
- Clubs- Ballet Folklorico, Crafting, Baseball, Travel, Wellness, Theater, Outreach, etc.
- Intramural Sports: Soccer, Volleyball, and Basketball